

- [1. Contents](#)
- [2. Product Description](#)
 - [2.1. Installation of the Programmer Module](#)
 - [2.2. Installation of the Software](#)
 - [2.3. Inserting the batteries](#)
- [3. How to use Catalogue Software](#)
 - [3.1. Configuration](#)
 - [3.2. Update](#)
 - [3.3. Program and Read](#)
- [4. Setting up the Remote Control](#)
 - [4.1. How to Readout Code & Identify RC Type](#)
 - [4.2. How to Program](#)
- [5. Appendix](#)
 - [5.1. Table of device types](#)
 - [5.2. Map of Main & Shift functions](#)

2. Product description

The Smarty Product Kit includes a setup CD, Programmer module, and the Remote Control that can be programmed by the PC software via USB/IR module

The content of the Product Kit:

- CD-ROM – includes the PC software for setting up the Remote Control
- PROGRAMMER MODULE with a USB cable – The Programmer is used to programme Remote Control unit by using USB/IR interface.
- REMOTE CONTROL – The remote control can be programmed as many times as you like. After programmed It can be used for the replacement of the original . It keeps the memory during batteries replacement.

2.1. Installation of the Programmer Module

The Programmer module is compatible with the USB HID specification 1.1 .

The system recognizes the Programmer Module as a common peripheral device like mouse, keyboard without the need for drivers on Windows XP, 2000 and ME.

Connect the Programmer module to an available USB port.

2.2. Installation of the Software

Insert the CD-ROM and installation procedure starts automatically. The Setup program will guide you through the steps to be followed.

2.3. Inserting the batteries

The remote control operates with 2x1.5v batteries (LR03/AM4/AAA). Insert the batteries as per polar indicated on battery cabin.

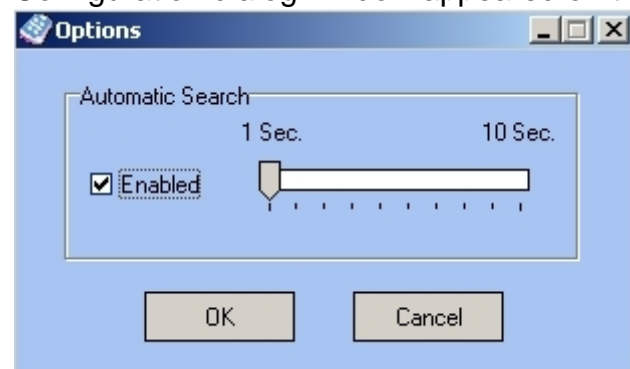
When inserted properly , the indicator LED turns on when any key pressed.

3. How to use Catalogue Software

The following functional features are used inside of the Catalogue software.

3.1. Configuration

Configuration dialog window appeared on the display when selected.



- Automatic Search

While you type in the Search field, the program automatically displays the search result (brand or model names). Click on the **Enabled box** to enable or disable.

Delay- Program waits amount of **delay time** before initiating the Automatic Search when enabled.

- Language

Select your language.

3.2. Update

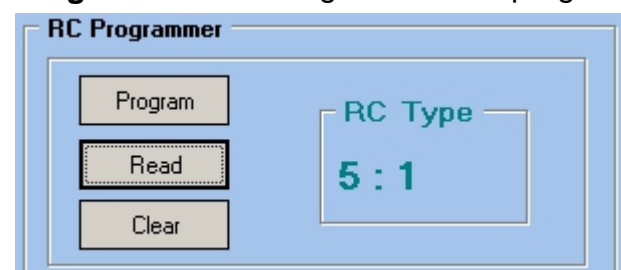
New products with remote control are placed on the market daily. The Catalogue software is capable of updating both Model database and program firmware.

The internet connection is required to update. If you want to insert new models to database, simply click on the **Update** item.

3.3. Program and Read

Read-Identification: The Catalogue software recognises the Remote-Control type and reads the codes that already pre-programmed then displays the result.

Program: The Catalogue software programs the Remote Control with the codes previously selected.

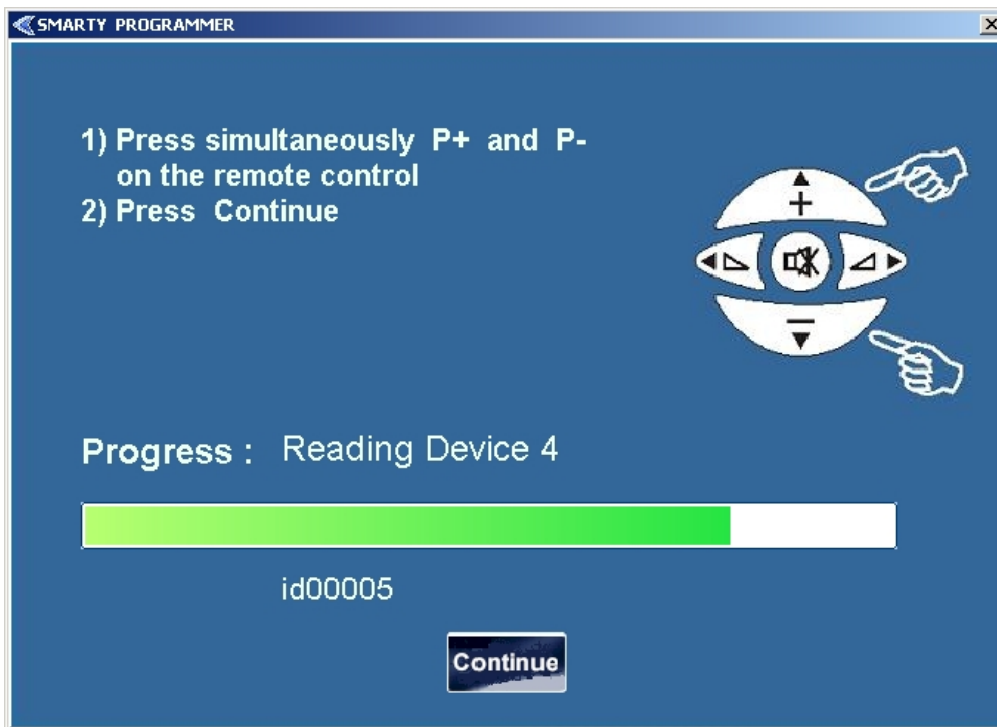


4. Setting up the Remote Control

This section describes the programming and reading steps to setup Remote Control unit.

4.1. How to Readout code & Identify RC Type

- Click on the **Read** item in RC Programmer field.
- Aim the remote control at the front of the Programmer module.
- Press simultaneously P+,P- buttons on the remote control until the indicator LED begins to blink.
- Click **Continue** to start reading. Progress bar shows the status of an ongoing operation.
- **Done!** RC Type , Brand-model names and code are displayed for each existing device.



4.2. How to Program

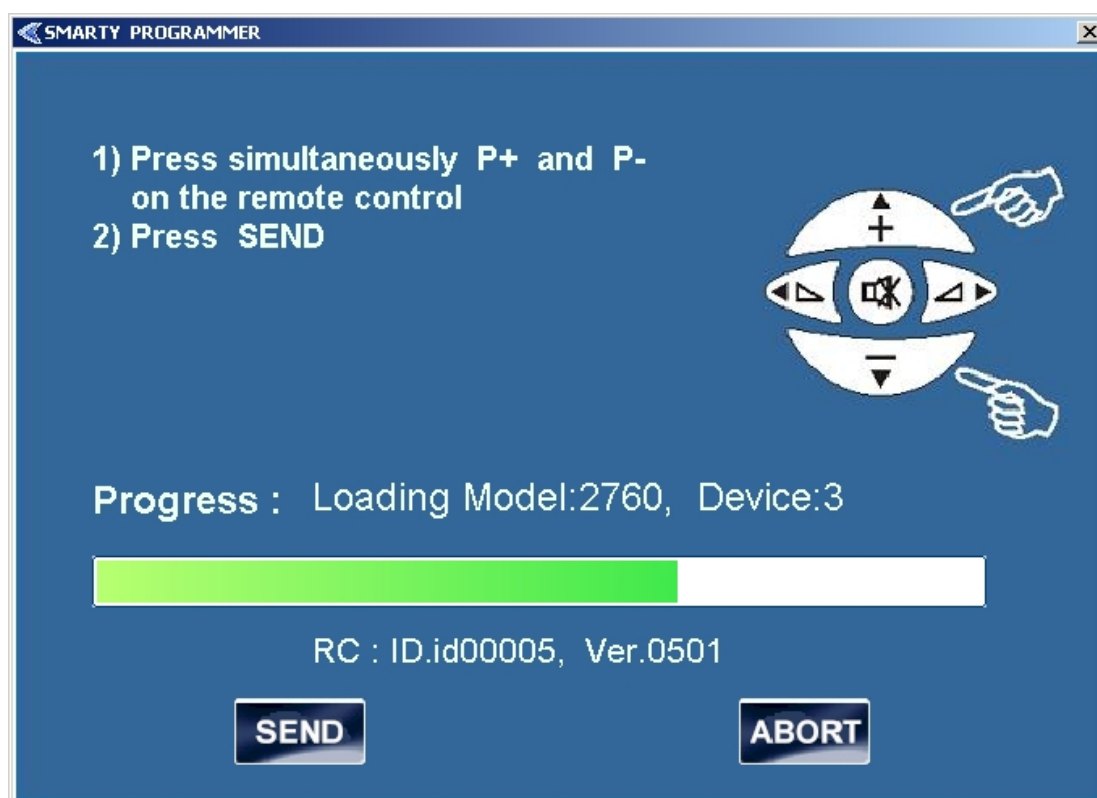
Make sure that RC type has been identified prior to programming.

- Select the desired device location with a click.(Ex: Device 1)
- Select the desired brand and model name of your original remote control by using Search fields.

PHILCO	P3002	R/C	2757
PHILEX	P3004	R/C	2754
PHILIPS	P3006	R/C	2706
PHILO	P3008Y	R/C	2762
PHOCUS	P3009	R/C	2707
PHOENIX (FORMENTI)	P3011	R/C	2708
PHONOLA (PHILIPS)	P3013	R/C	2709
PHONOTREND	P3014	R/C	2710
PILOT	P3016	R/C	2712
PIONEER	P3017	R/C	2714
PK SAT (HIRSCHMANN)	P3021Y	R/C	2717
PLANET	P3023	R/C	2722
PLANTRON	P3026Y	R/C	2723
PLASMATECH	P3027Y	R/C	2728
PLAYDOR	P3028	R/C	2750
PLAYSONIC	P3029	R/C	2730
PMB	P3030	R/C	2731
POLLIN	P3031	R/C	2732
POLYTRON (KATHREIN)	P3033	R/C	2856

Device 1	3872	PANASONIC TNQ 1621
Device 2	2125	PHILARMONIC C 36 PS
Device 3	2760	PHILIPS RC 220
Device 4	2451	SONY RM 728
Device 5	2723	PILOT P3026Y

- Double click on the row of the chosen code.
- Select the desired Model for each existing device in the same manner.
- Click on the **Program** item in RC Programmer field.
- Aim the remote control at the front of the Programmer module.
- Press simultaneously P+,P- buttons on the remote control until the indicator LED begins to blink.
- Click **Send** to start programming.Indicator LED flashes during programming and progress bar shows the status of an ongoing operation.



- **Done!** Remote control is ready to use.It keeps memory when batteries are replaced.It may be re-programmed many times.

5. Appendix

5.1. Table of Device Types

TV	Tv models
DVD	Dvd and Vcd models
VCR	Vcr models
R/C	Original remote control models(Tv,Dvd,Vcr ,Sat)
SAT	Analog-Digital satellite receiver models
DTT	Dtt receiver models
AUX	Hi-fi stereo,Disc, audio devices
COMBO	Tv models with integrated Dvd,Vcr player or Sat models

5.2. Map of Main & Shift functions

Figure 1.a

TV		SAT/DTT		DVD/VCD		VCR		AUX	
Main	Shift	Main	Shift	Main	Shift	Main	Shift	Main	Shift

	On	On/off	—	On/off	—	On/off	On/off TV	On/off	—
--	----	--------	---	--------	---	--------	-----------	--------	---

Shift Key

POP Swap	i+ Recall #	Swap Prev	Recall	▲Open/Close	◀Go To	▲Open/Close	◀Go To	▲Open/Close	Disc Skip
1	+ 11	1	Pers. De-emph	1	Program	1	Once Encore	1	Tuner Disc1
2	+ 12	2	22Khz	2	Mode	2	Daily Insert	2	Cd Disc2
3	R 13	3	Copy/Delete	3	Effect	3	Weekly Vps	3	Phono Disc3
4	- 14	4	P.lock	4	EQ Mark	4	Counter Reset Mark	4	TapeA Disc4
5	- 15	5	Erase	5	Resume Cancel	5	Counter Clock Tape	5	TapeB Disc5
6	16	6	Help	6	Repeat	6	Repeat	6	Repeat
7		7	Browse	7	Lang Remain	7	Sp/Lp	7	Random Clock
8	Clear Hour	8	Clear	8	Zoom Shuffle	8	Count Remain	8	Shuffle
9	Game Minute	9	LNB	9	Game Intro	9	Skip/Search	9	Intro/Info
0		0	View	0	Clear 3D	0	Clear	0	Clear Erase
1-/--	3-	Fav Pref.	Search -/--	-/-- 10+	Search Step	-/--	Search Index	-/--	Search Index Mark
2-P/C	4-		H/V UHF		Title C/CH	C/CH	Audio Dub.	Program	Surround
P+	Tune+	Prog+			Echo▲ Prog+		Prog+		Prog+ Tune+
P-	Tune-	Prog-			Echo▼ Prog-		Prog-		Prog- Tune-
		Mute	Dec Store/Mem	Mute Audio/Off	PBC Store/Mem	AUDIO	Count/Mem Store/Mem	Mute	Store/Mem

Figure 1.b

TV		SAT/DTT		DVD/VCD		VCR		AUX	
Main	Shift	Main	Shift	Main	Shift	Main	Shift	Main	Shift
		Vol +	East Zoom	Vol +		Tracking		Vol +	Track + Echo
		Vol -	West Interactive	Vol -		Tracking		Vol -	Track - Karaoke
	Alarm M/S	Sleep Timer	M/S Diseqc	Timer	M/S Rep A-B	Auto/Track	Timer		M/S
Menu/Setup	Mode Band UHF	Menu/Setup	Mode	Menu	Top Menu Select	Menu	Preset Show View	Menu	Setup Mode
Exit	Scan	Exit	Back Scan	Exit Return	R/L	Exit Return	Go to Erase	Exit Return	Scan
		Text	App	●	Angle	●	Rec On/Off	TapeA ●	TapeB ●
		Epg	Guide		Fr.Adv		Fr.Adv	TapeA	TapeB
		Lang	Opt?		2X 3X		2X 3X	TapeA	TapeB
		Info i	Tv/Rad		II		II	TapeA	TapeB
TV	Pal/Sec	TV	16:9	Setup	Tv/Vcr Tv/Av	TV	Otr Rec Mode	VIDEO	Band
AV	System	Tv/Sat	System Pal/Sec	Dvd/Tv	System Input source Pal/Sec	VCR	System Input source Pal/Sec	AUX	Fm Mode System
Sound. Menu	L-II	Audio	Freeze		Audio		Counter Stop	TapeA	TapeB
Pict. Menu		Video	Pause	II	Video Reset	II	Video	TapeA II	TapeB II
F2 Menu Up		Menu Up	Green	Menu Up	Random Green	Menu Up	Slow	Menu Up	CD/
F4 Menu Down		Menu Down	Blue	Menu Down	Digest Blue	Menu Down	Slow	Menu Down	CD/ ●
F3 Menu Right		Menu Right	Yellow	Menu Right	Karaoke Yellow	Menu Right	Set	Menu Right	CD/
F1 Menu Left		Menu Left	Red	Menu Left	Auto/Track Red	Menu Left	Set	Menu Left	CD/
OK ENTER		OK ENTER	List	OK ENTER	Display Recall	OK ENTER	Display Recall	OK ENTER	CD/